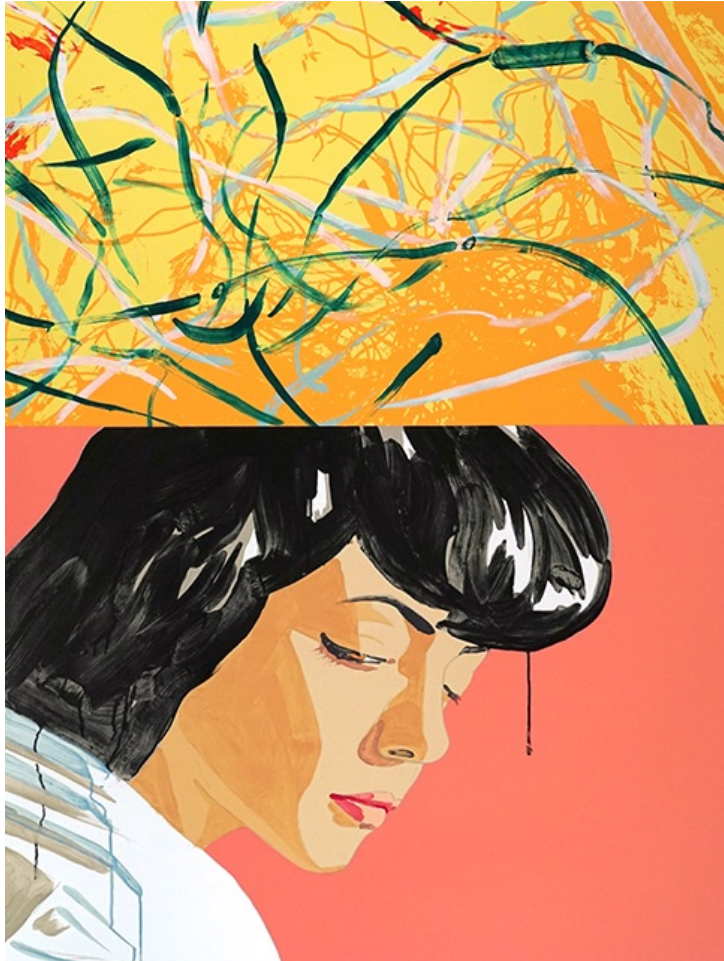


LCEMINNENEGRISSEEDITIIONSLSLCEMINNENEGRISSEEDITIIONSLSLCE
CEMINNENEGRISSEEDITIIONSLSLCEMINNENEGRISSEEDITIIONSLSLCE
MINNENEGRISSEEDITIIONSLSLCEMINNENEGRISSEEDITIIONSLSLCE
MINNENEGRISSEEDITIIONSLSLCEMINNENEGRISSEEDITIIONSLSLCE
NENEGRISSEEDITIIONSLSLCEMINNENEGRISSEEDITIIONSLSLCE
CEGRISSEEDITIIONSLSLCEMINNENEGRISSEEDITIIONSLSLCE
CEGRISSEEDITIIONSLSLCEMINNENEGRISSEEDITIIONSLSLCE
GRISSEEDITIIONSLSLCEMINNENEGRISSEEDITIIONSLSLCE
ISEEDITIIONSLSLCEMINNENEGRISSEEDITIIONSLSLCE

MICHAEL
STEINBERG
FINE
ARTS



Hannah, Pink, 2015
Original lithograph from 28 plates proofed and
printed on a Steinmesse & Stollberg Dufa 813
flatbed proof press on CarBera Magnani Revere
Felt Standard White mould made paper
55h x 42.25w in.
EdiBon of 35
Published by Houston Fine Art Press
US 15,000

A 1 3 6 - B A X T E R - S T R E E T - S U I T E 1 C - N E W - Y O R K - N E W - Y O R K - 1 0 0 1 3
T 2 1 2 2 0 3 2 0 5 1 F 2 1 2 9 4 1 1 8 2 2 E M A I L H S F I N E A R T 5 5 @ G M A I L . C O M E M